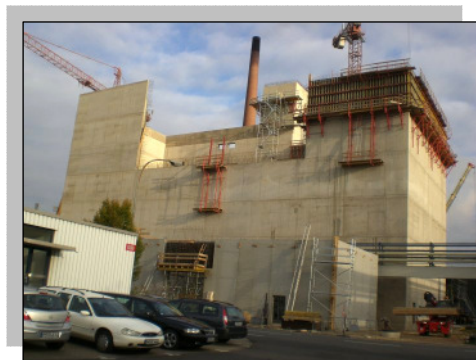


# Construction of RDF (Refuse Derived Fuels) Power Plant

IHKW Andernach GmbH



## Project characteristics

Rasselstein GmbH (TKS-RA), a daughter company of ThyssenKrupp AG, is a tin plate producing manufactory. Project executing organisation is IHKW Andernach GmbH which is implementing a new combined heat and power plant to supply thermal heat (steam) and electricity for Rasselstein company.

The process is based on the principle of co-generation power technology. The Steam boiler generates high pressure steam of 70 bar electricity which is supplied to the 20 kV public grid.



## Tasks carried out by AWIPLAN-PPD

- Design and tendering of subsoil constructions
- Design and tendering of civil constructions and technical supply of administration building, boiler house and process buildings
- Consulting during tendering phase
- Conducting of bidder talks and consulting of BHI GmbH
- Contract negotiations
- Statical calculation and implementation drawings
- Project management and construction survey service during erection phase



## Key data at a glance

Start of construction (first spade) .....	September 2006
Completion .....	beginning of 2008
RDF throughput .....	~140,000 t/a
RDF boiler .....	60 MW
Power output .....	90,000 MWh/a
Thermal output .....	270,000 MWh/a
Sewage sludge throughput .....	22,000 t/a